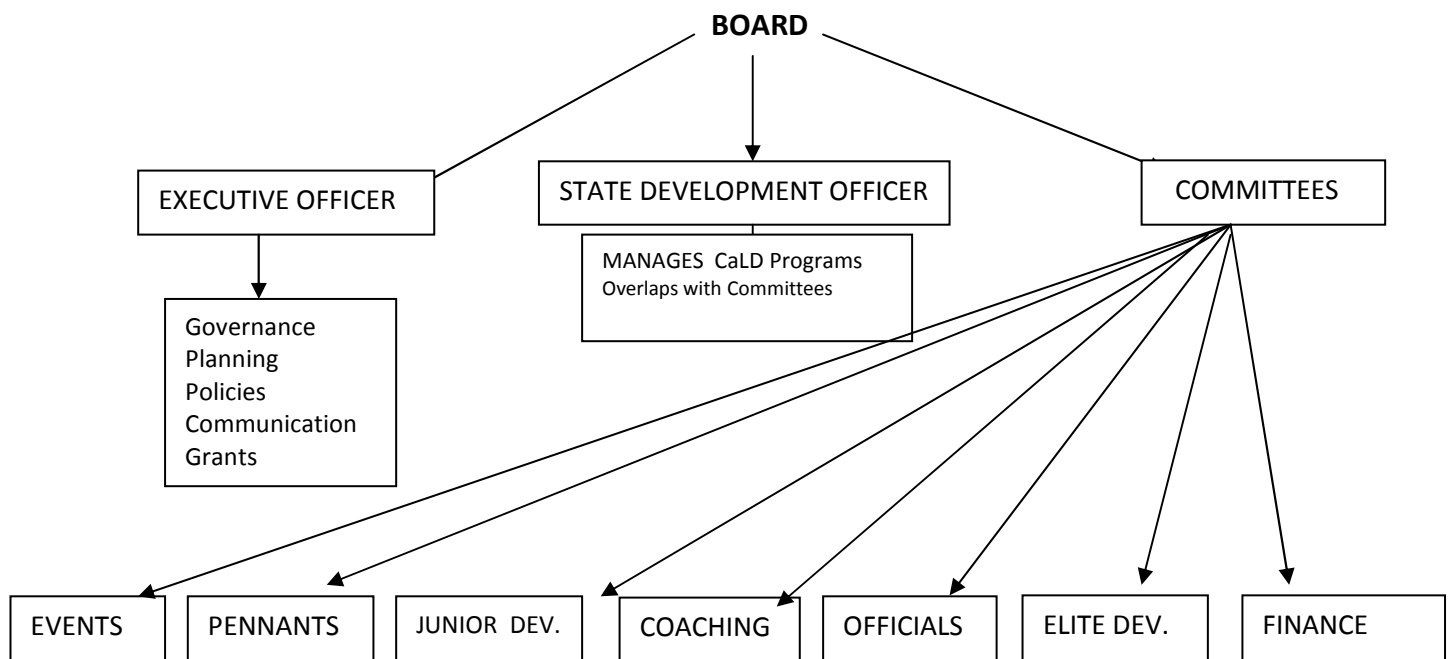


BAWA ORGANISATION and STRUCTURE



Each Board Member has a PORTFOLIO that covers the following Committees. The role is to oversee each of the Committees – the Board Member will act as liaison between the Committee Chair and the Board and report to the Board. The Board Member MAY also be the Chair of the Committee, depending on circumstances.

EVENTS: Mark Duxbury

PENNANTS: Judith Cousins

JUNIOR DEVELOPMENT: Stephen Teo

COACHING: Donna Dewitt

OFFICIALS: Bruce Napier

ELITE DEVELOPMENT: Kelly Hoare

FINANCE: Kim Rodgers

REGISTRAR: Dianne Booth

All Board Members have responsibility to assist in governance matters: initiate planning, develop policies, liaise with the membership, and promote participation at all levels and in all areas.

The Executive Officer manages the policies set by the Board, oversees operational matters, promotes the sport, acts as Public Relations manager, prepares grant applications, and in all ways supports the Board's decisions.

The State Development Officer manages the CaLD programs, liaises with the Executive Officer and reports to the Board. These programs may overlap with the activities of some committees. Promoting the sport at all times is seen as a prime function.